

ALIUM

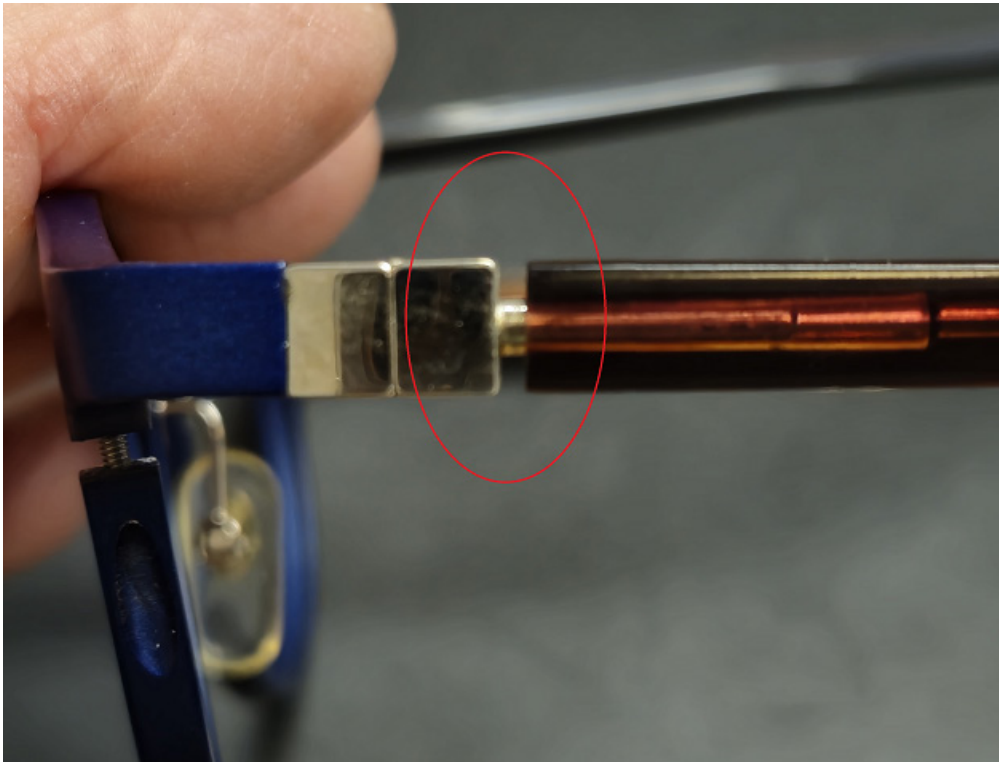
# Shrinking Acetate Temple Sleeve

Spare Parts Guide for CSS,  
Sales Representatives, and Customers

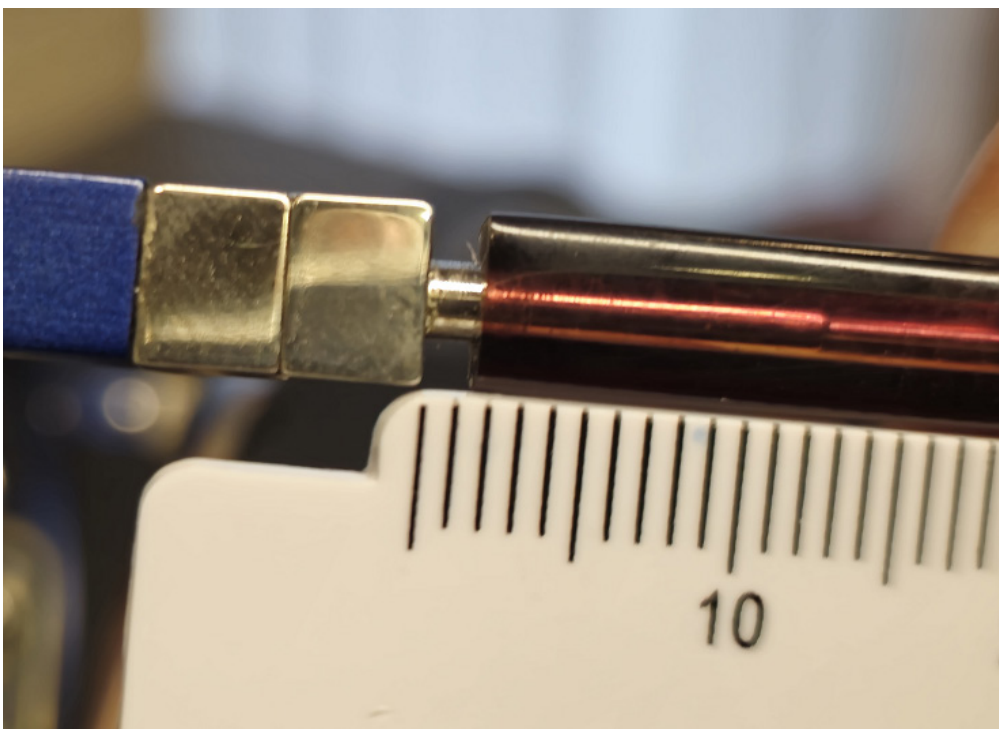
2024

## Alum Acetate Temple Sleeve Repair

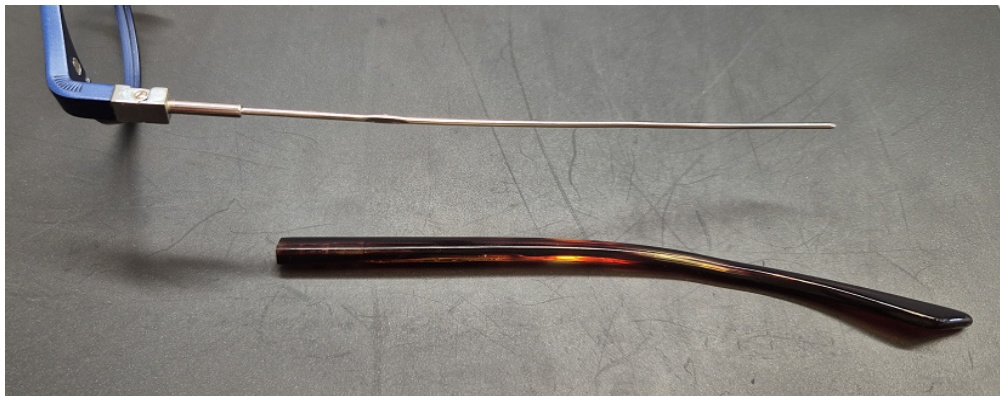
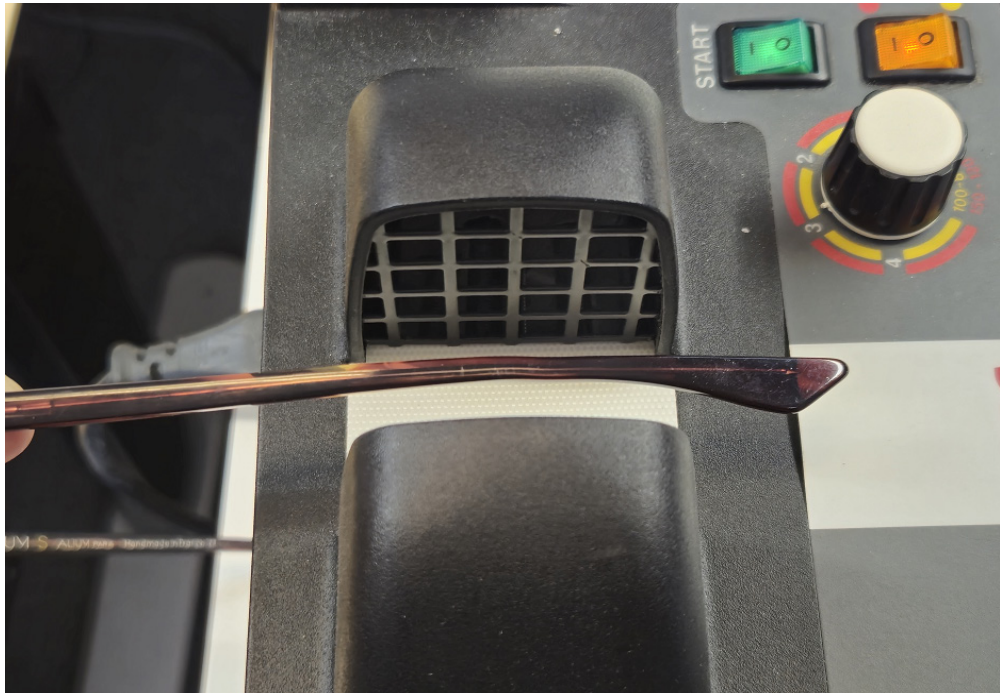
Alum temple sleeve has shrunk.



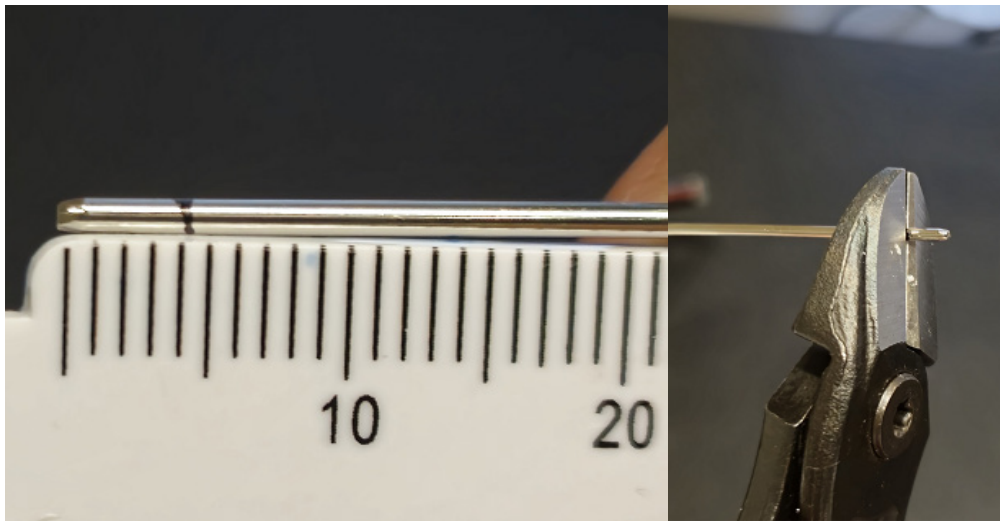
Measure the chrinkage.



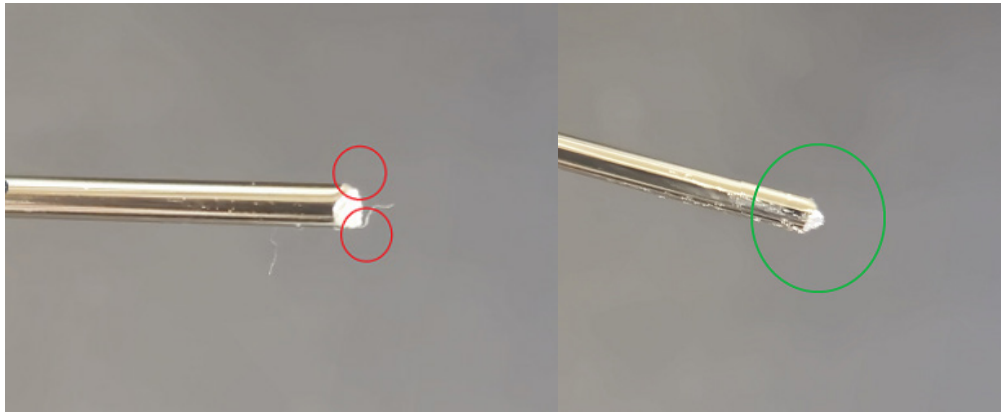
Heat and straighten the ear bend. Wriggle off the temple sleeve from the temple core.



Add 2mm to the measure of the shrinkage and cut off the end of the temple core.



File the sharp end of the temple core.



Remount the temple sleeve and bend the ear bend.

